

*** Please confirm plant model / serial number**

RECOMMENDED SPARE PARTS LIST

Quantity	Part Number	Description	Location On Plant
1	1108388	Single Mac Valve 93 Series	AGG Feed / Cement Feeds
1	1108389	Double Mac Valve 93 Series	Cement Discharge
1	1375076	I300 x 8 HD Air Cylinder w/reed	Cement Feed & Discharge
1	1237035	I450 x 8 HD Air Cylinder	AGG Feed
1	1237066	I300 HD Cylinder Repair Kit	CEM Discharge & Feed
1	1237068	I450 HD Cylinder Repair Kit	AGG Feed
5	1237222	V-Belts AX-75	9" Feeder Screw
3	1406180	V-Belts BX-50	12" Feeder Screw
2	1237229	V-Belts BX-53	Cement Batcher Screw
1		V-Belts	Air Compressor IR 20 HP
1	1236988	10 1/2" x 10" Vinyl Shrd	9" Feeder Screw & Cement Two
1	1236980	12 1/2" x 12" Vinyl Shrd	12" Feeder Screw
1	1236985	10 1/2" x 12" Vinyl Shrd	CEM II Feed & Dust Reclaim
1	1455853	12 1/2" x 8 1/2" x 12" Vinyl Shrd	Batcher Discharge
1	1236931	Shroud Pure Gum 24" x 24"	Discharge Hood
1	1237122	Filter	LP Blower
1	1237004	Filter	Air Compressor IR 7.5 HP-25 HP
1	1237255	2" Hanger Bearing	9" Feeder Screw
1	1237272	2" Lip Seal (Replacement)	9" Feeder Screw
1	1237254	2 7/16" Hanger Bearing	12" Feeder Screw
1	1237275	2 7/16" Lip Seal Replacement	12" Feeder Screw
1	0072500	Water Meter Badger Scaler Board	Water
1	0072508	Water Meter Badger Rotor & Spindle	Water
1	154420	4.5K Shearbeam Load Cell	Cem Scale
1	1401030	20K Shearbeam Load Cell	Agg Scale



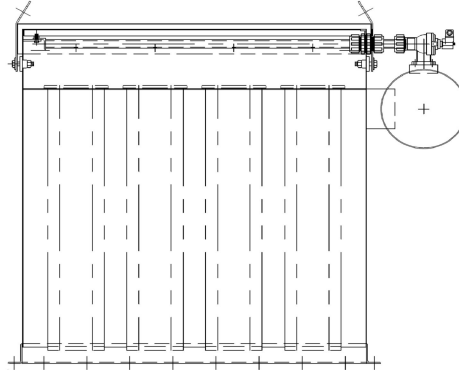
An Oshkosh Corporation Company

**All Plants
Misc. Recommended Spare Parts**

Quantity	Part Number	Description	Location On Plant
2	1236866	Hose Clamp 10" - 16" Diameter	Shrouds
1	1237489	24" Diameter Shroud Clamp	Discharge Boot
2	PB0128	Air Pad Assemblies	Silo Aeration
20	143650	2" Blower Hose	Silo Aeration
2	1236861	2" Hose Clamps	Silo Aeration
1	1375117	1/2" Regulator	High Pressure Air
1	146125	Regulator Gauge	High Pressure Air
1	146108	1/2" Lubricator	High Pressure Air
1	1377874	1/2" Filter	High Pressure Air
50	140055	1/2" DOT Air Hose	High Pressure Air
4	140053	Adaptor 1/2" NPT x 1/2" Hose Str.	High Pressure Air
4	140062	Adaptor 1/2" NPT x 1/2" Hose 90 Deg.	High Pressure Air
4	140057	Adaptor 3/8" NPT x 1/2" Hose Str.	High Pressure Air
2	140063	Adaptor 3/8" NPT x 1/2" Hose 90 Deg.	High Pressure Air
2	140056	Adaptor 1/4" NPT x 1/2" Hose Str.	High Pressure Air
4	140059	Adaptor 1/2" Union	High Pressure Air
4	140054	Adaptor 1/2" Tee	High Pressure Air
2	145803	Flow Controls 1/2" x 3/8" NPT	High Pressure Air
2	145802	Flow Controls 1/2" x 1/2" NPT	High Pressure Air
1	1237127	Pneumatic Vibrator	Batchers
25	1236885	3/8" X 6" Skirtboard Rubber	Conveyors
1	145163	Cylinder Reed Switch	Air Cylinders-Pneumatic
2	0201708	1/2" Quick Exhaust Valves	Air Cylinders-Pneumatic
1	1467484	Relay Base	Electrical System
2	1467684	Relay 120v	Electrical System
1	1460456	Timer Base	Electrical System
1	1237405	Timer 120v	Electrical System
12	1408727	Fuse 2 amp	Electrical System



An Oshkosh Corporation Company



PJC 300S Silo Filter Vent Parts List

Quantity	Part Number	Description
8	1237165	Cartridges 8"x40"
2	145557	Turbo 1" EP25 PJ Valve
2	1375082	1" Bulk Head Connector
1	145576	6 Pos. Pulse Jet Timer Board
1	1375117	Regulator 1/2" High Pressure Air
1	146104	Coalescing Filter 1/2"



An Oshkosh Corporation Company

BV-14 Batcher Filter Vent Parts List

Quantity	Part Number	Description
14	1237154	Bags 4" x 16"
14	BH0565	Bag Hardware Kit