

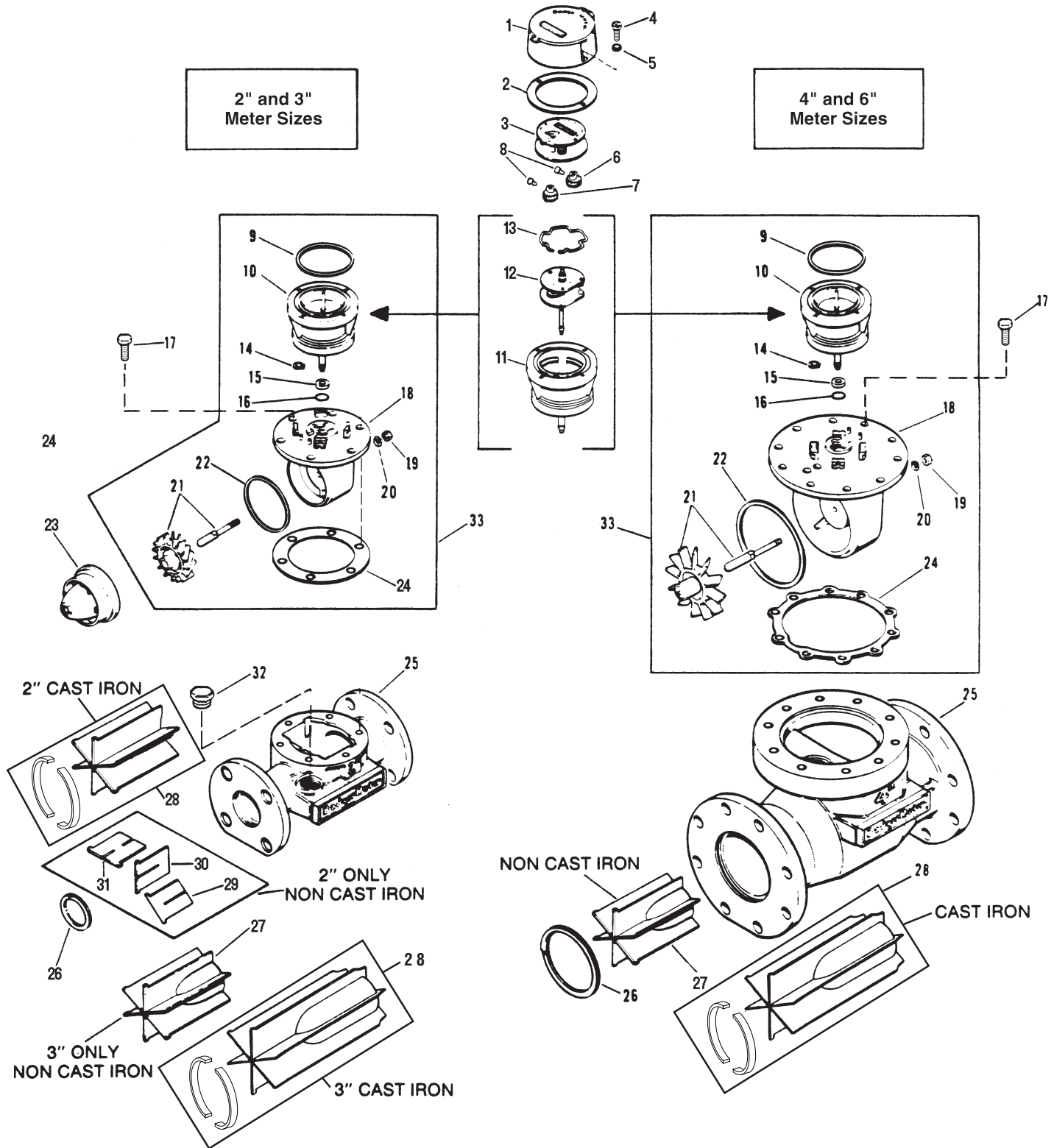
**Model Turbo - Sizes
2" through 6"**

Industrial Turbine Meters

**Repair
Parts**

**2" and 3"
Meter Sizes**

**4" and 6"
Meter Sizes**



BadgerMeter, Inc.

IRP-031-21
Part No. 53401-031

ITEM NO.	DESCRIPTION	PART NUMBERS			
		2"	3"	4"	6"
1	Hood Assembly, Register	58234-002	58234-002	58234-002	58234-002
2	Gasket, Register Cover	58404-001	58404-001	58404-001	58404-001
3	Register Assy.(Specify meter size & unit of measure)	-----	-----	-----	-----
4	Screw, Cover to Register Base	55048-251	55048-251	55048-251	55048-251
5	Lockwasher	55293-010	55293-010	55293-010	55293-010
6	Change Gear, Register (Specify no. of teeth & dia.)	-----	-----	-----	-----
7	Change Gear, Register Base (Spec. no. of teeth & dia.)	-----	-----	-----	-----
8	Setscrew, Change Gear	1065-000	1065-000	1065-000	1065-000
9	Tetraseal	22559-034	22559-034	22559-034	22559-034
10	Register Base Assembly, 366 2/3 : 1	56786-001	56786-001	56786-002	56786-003
10	Register Base Assembly, 1200: 1	56786-004	56786-004	56786-005	56786-006
10	Register Base Adapter (Reed)	62946-001	62946-001	62946-002	62946-003
10	Register Base Adapter (Magnetoresistive)	59672-001	59672-001	59672-002	59672-003
11	Register Base, Only	56785-001	56785-001	56785-002	56785-003
12	Gear Train Assembly w/Magnet, 366 2/3 : 1	58619-001	58619-001	58619-002	58619-003
12	Gear Train Assembly w/Magnet, 1200 : 1	58619-004	58619-004	58619-005	58619-006
13	Retaining Ring, Gear Train Assembly	1013-000	1013-000	1013-000	1013-000
14	Retaining Ring, Register Base (316 Stain. Steel)	22886-012	22886-012	22886-012	22886-012
15*	Spacer, Register Base.....	57337-001	57337-001	57337-001	57337-001
16*	O-Ring, Register Base, Buna N.....	55300-110	55300-110	55300-110	55300-110
16*	O-Ring, Register Base, EPR.....	31132-046	31132-046	31132-046	31132-046
16*	O-Ring, Register Base, Viton A	31132-045	31132-045	31132-045	31132-045
17	Bolt, Hex. Head	55030-166	55030-166	55031-116	55031-116
18	Head,Only (Stainless Steel).....	57312-001	57312-001	57282-001	57287-001
18	Head,Only (Bronze).....	34844-002	34844-002	58642-001	58643-001
19	Nut, Hex. Rotor Spindle	55006-035	55006-035	55007-028	55007-028
20	Lockwasher, Rotor Spindle.....	55274-008	55274-008	55274-011	55274-011
21	Rotor & Spindle, Ryton, 2-Pole (Buna N Seal).....	56998-034	56998-035	56998-036	56998-037
21	Rotor & Spindle, Ryton, 2-Pole (Viton Seal).....	56998-038	56998-039	56998-040	56998-041
21	Rotor & Spindle, Ryton, 2-Pole (EPR Seal)	56998-042	56998-043	56998-044	56998-045
21#	Rotor & Spindle, Ryton, 4-Pole (Buna N Seal).....	56998-046	56998-047	56998-048	56998-049
21#	Rotor & Spindle, Ryton, 4-Pole (Viton Seal)	56998-050	56998-051	56998-052	56998-053
21#	Rotor & Spindle, Ryton, 4-Pole (EPR Seal)	56998-054	56998-055	56998-056	56998-057
22*	Tetraseal, Head, Buna N	22559-043	22559-043	22559-044	22559-045
22*	Tetraseal, Head, EPR	22559-047	22559-047	22559-048	22559-049
22*	Tetraseal, Head, Viton A.....	22559-050	22559-050	22559-051	22559-052
23	Nose Cone (Ryton).....	57341-003	-----	-----	-----
24*	Gasket, Hd., Nonasbestos (Buna N Seal Only).....	34899-003	34899-003	56331-003	56327-003
24*	Gasket, Hd., Nonasbestos (EPR/Viton Seal Only).....	34899-004	34899-004	56331-004	56327-004
25	Housing, Bronze, 150# Flange	56079-010	34841-009	57280-013	57288-013
25	Housing, Bronze, 300# Flange	56079-011	34841-010	57280-014	57288-014
25	Housing, Cast Iron, 125# Flange (see note 2).....	58555-003	58556-003	58557-003	58558-003
25	Housing, Cast Iron, 250# Flange (see note 2).....	58555-004	58556-004	58557-004	58558-004
25	Housing, 316 Stainless Steel, 150# Flange	57640-005	57641-005	57280-015	57288-015
26	Retaining Ring, Straightening Vane	34900-002	34900-001	34900-003	34900-004
27	Str. Vane Assy. for Brz, Cst Stl, St Stl Hsgs. (See 1).....	-----	58620-003	56340-005	56340-006
28	Str. Vane Assy. (Service kit)for Cast Iron Hsgs. (See 2).....	62975-001	58620-004	56340-007	56340-008
29	Straightening Vane	56082-001	-----	-----	-----
30	Straightening Vane	56083-001	-----	-----	-----
31	Straightening Vane	56084-001	-----	-----	-----
32	Bypass Plug, Brass	62151-002	62151-002	-----	-----
32	Bypass Plug, Stainless	62151-001	62151-001	-----	-----
	Dummy Cover (not shown).....	56813-001	56813-001	56814-001	56815-001
	Gasket, Dummy Cover (not shown).....	57646-001	57646-001	57647-001	57648-001
33	Incl. Head Assy, Complete (Consult factory w/specs.).....	-----	-----	-----	-----

* Recommended spare parts.

Rotors with 4 pole magnets are used only with electronic transmitters.

Note 1: These parts are also for cast iron housings for meters shipped prior to August, 1986.

Note 2: These cast iron housings and str. vane numbers are for meters shipped as of August, 1986.

Note 3: For 2" & 3" meters, shims are provided with the rotor spindle. It is important to reinstall the shims when servicing the rotor & spindle assembly.

IMPORTANT: As of 9-1-92, all Turbos with 4-20 mA transmitters use a 2-pole rotor!



Please see our website at
www.badgermeter.com
 for specific contacts.

Due to continuous research, product improvements and enhancements, Badger Meter reserves the right to change product or system specifications without notice, except to the extent an outstanding contractual obligation exists.



BadgerMeter, Inc.

P.O. Box 245036, Milwaukee, WI 53224-9536

Telephone: (414) 355-0400 / (877) 243-1010

Fax: (414) 355-7499 / (866) 613-9305

www.badgermeter.com