



An Oshkosh Corporation Company

**SPECIFICATIONS FOR MODEL PJC-300S CARTRIDGE DUST CONTROL**

**MODEL CON-E-CO-PJC-300S**

NUMBER OF CARTRIDGES	8
NOMINAL CARTRIDGE DIAMETER	8"
NOMINAL CARTRIDGE LENGTH	40"
TOTAL FILTRATION AREA	304 SQ. FT.
MIN. DESIGN EFFICIENCY OF DUST COLLECTOR	99.9%
AIR TO CLOTH RATIO	5.0 TO 1.0 (CEMENT)
CAPACITY FOR CEMENT	1,500 C.F.M. (RECOMMENDED MAXIMUM)
CAPACITY FOR FLYASH	1000 C.F.M. (RECOMMENDED MAXIMUM)
DISCHARGE AREA	.67 SQ. FT.
DISCHARGE VELOCITY @1500 C.F.M.	38 FT. / SEC.
DIRECTION OF AIR DISCHARGE	DOWN WARD
DISCHARGE SHAPE	(2) 11/16 X 48" SLOTS (2) 5/8 x 30" SLOTS
NORMAL OPERATING DISCHARGE TEMP & PRESSURE	AMBIENT
OUTLET MOISTURE CONTENT	IDEALLY ZERO
CLEANING MECHANISM	PULSE JET
FREQUENCY OF CLEANING	VARIABLE

**CARTRIDGE SPECIFICATIONS**

CARTRIDGE DIAMETER	7 7/8" O.D.
CARTRIDGE LENGTH	39 1/4"
CONSTRUCTION	PLEATED
FIBER	SPUN BONDED POLYESTER
WEIGHT	8 OZ / SQ. YD.
PERMEABILITY (.5" WATER)	24 CFM/SQ FT

**DISCHARGE INTO CARTRIDGES**

**CEMENT SILO**

LB / HR  
GR / FT<sup>3</sup>

**INTO CARTRIDGES**

.177 LB/YD<sup>3</sup>\* \_\_\_ YD<sup>3</sup>/HR  
.078 GR HR/LB FT<sup>3</sup>\* \_\_\_ LB/HR

**FLYASH SILO**

LB / HR  
GR / FT<sup>3</sup>

**INTO CARTRIDGES**

.115 LB/YD<sup>3</sup>\* \_\_\_ YD<sup>3</sup>/HR  
.117 GR HR/LB FT<sup>3</sup>\* \_\_\_ LB/HR

**OUT OF CARTRIDGES**

FOR ALL OUT OF CARTRIDGES VALUES, MULTIPLY THE INTO CARTRIDGES VALUES BY .001

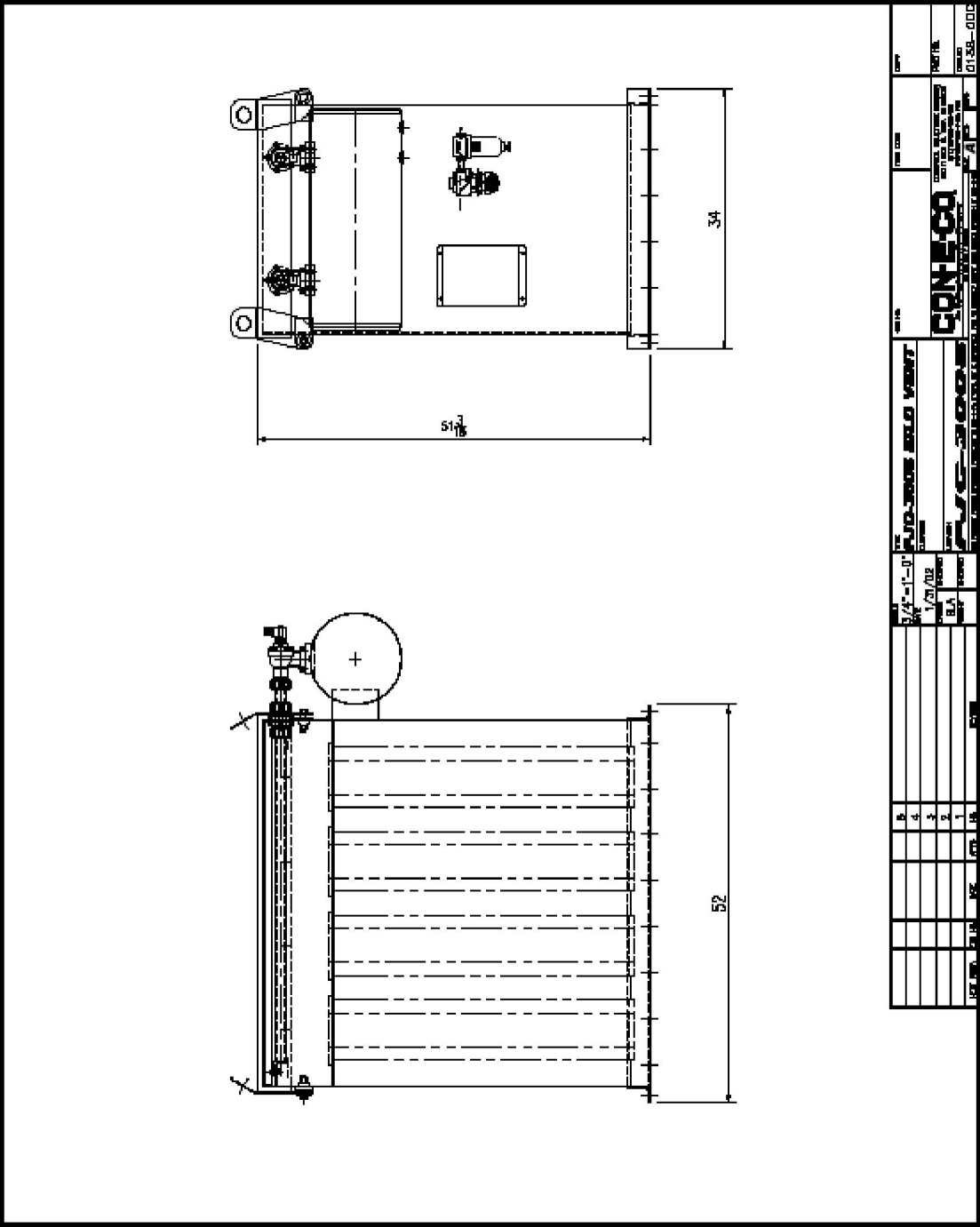


**SOLID PRODUCTS. SOLID PERFORMANCE.**

237 N. 13<sup>TH</sup> ST - PO Box 430 - Blair, NE 68008

Phone: 800-656-2651 Fax: 402-426-4181 Service/Parts Fax: (402)-533-9292

E-MAIL: parts@con-e-co.com WEBSITE: www.con-e-co.com



DATE	1/21/12	REV	1
BY	BLA	REV	1
CHK		REV	1
APP		REV	1
DES		REV	1
DWG NO.	10-30000-000	REV	1
CONCRETE PUMP TRUCK PART 18		01.55-000	



**SOLID PRODUCTS. SOLID PERFORMANCE.**  
 237 N. 13<sup>TH</sup> ST - PO Box 430 - Blair, NE 68008  
 Phone: 800-656-2651 Fax: 402-426-4181 Service/Parts Fax: (402)-533-9292  
 E-MAIL: parts@con-e-co.com WEBSITE: www.con-e-co.com