



An Oshkosh Corporation Company

**SPECIFICATIONS FOR MODEL 22-36 CEMENT BATCHER VENT**

**MODEL 22-36 SPECIFICATIONS**

TOTAL CLOTH AREA	36 SQ. FT.
NUMBER OF BAGS	22
HOUSING HEIGHT	1'-10"
HOUSING WIDTH & LENGTH	0'-10" X 4'-6.5"
BAG CLEANING METHOD	REVERSE AIR FLOW (From batcher filling and emptying)
MAXIMUM OPERATING TEMPERATURE	170 DEGREES F
DISCHARGE AREA	.33 FT <sup>2</sup> (48 IN <sup>2</sup> )
CFM/FT <sup>2</sup> THROUGH BAGS	5
CAPACITY	180 CFM
AIR SPEED OUT OF DEVICE	545 FT / MIN
DIRECTION OF AIR DISCHARGE	DOWN
DISCHARGE SHAPE	(2) 2" X 12" SLOTS
NORMAL OPERATING TEMP & PRESSURE	AMBIENT
OUTLET MOISTURE CONTENT	IDEALLY ZERO

**BAG SPECIFICATIONS**

BAG DIAMETER	4-1/2" DIA.
BAG LENGTH	16"
CONSTRUCTION	3 X 1 TWILL
FIBER	SEAMLESS POLYESTER
FINISH	GREIGE
WEIGHT	7.1 OZ./SQ. YD.
THICKNESS	0.019"
MULLEN BURST	275 PSI (Min)
PERMEABILITY RANGE (0.5" WATER)	30-55 CFM/SQ. FT.
BAG EFFICIENCY	99.9% (*)

**BATCHER VENT**

LB / HR  
GR / FT<sup>3</sup>

**INTO BAGS**

.00144 LB/YD<sup>3</sup> \* \_\_\_ YD<sup>3</sup>/HR  
.648 GR HR/LB FT<sup>3</sup> \* \_\_\_ LB/HR

**OUT OF BAGS**

FOR ALL OUT OF BAGS VALUES, MULTIPLY THE INTO BAGS VALUES BY 0.001.

\* BASED ON TESTS BY THE UNIVERSITY OF TENNESSEE

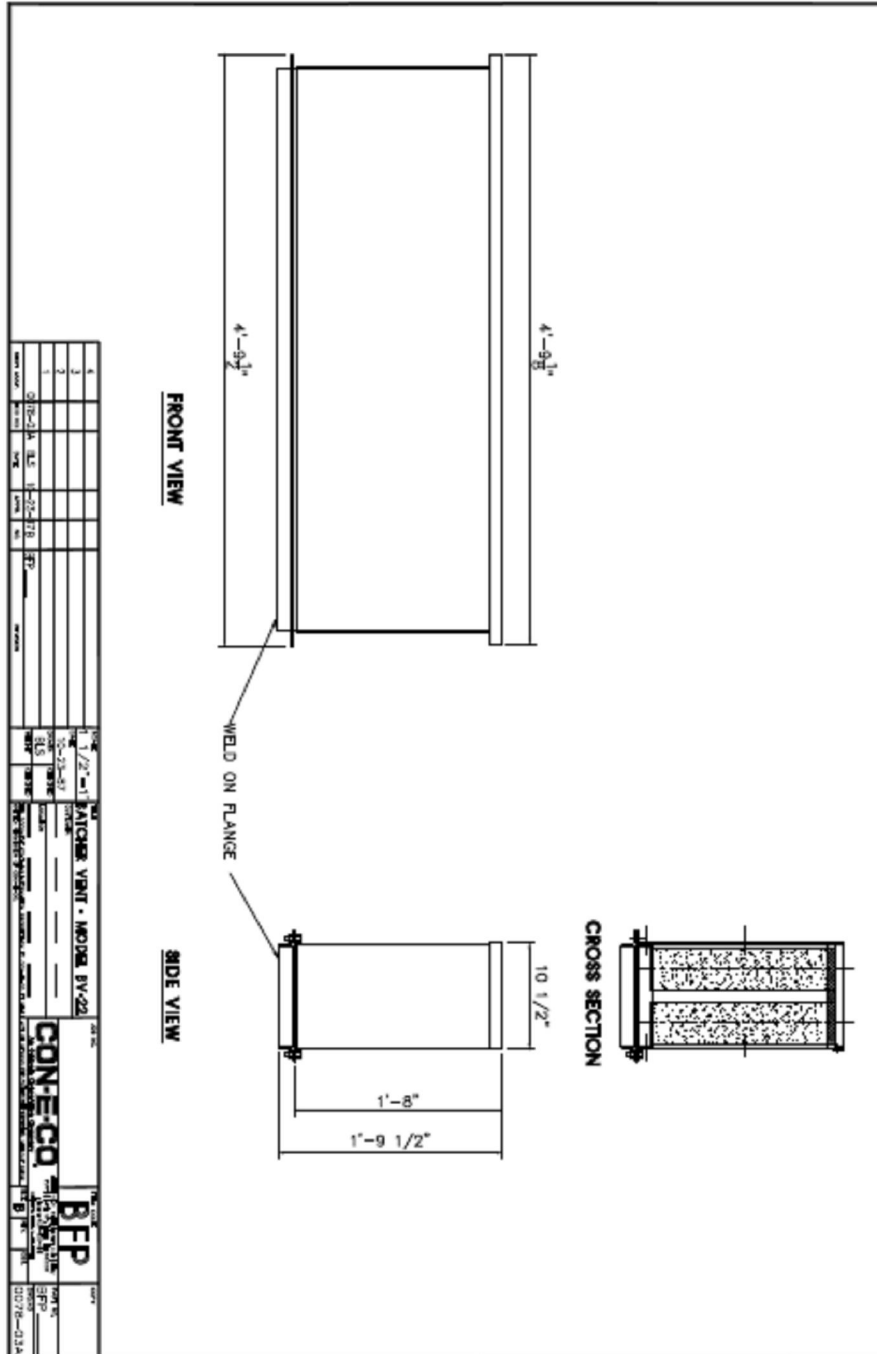


**SOLID PRODUCTS. SOLID PERFORMANCE.**

237 N. 13<sup>TH</sup> ST - PO Box 430 - Blair, NE 68008

Phone: 800-656-2651 Fax: 402-426-4181 Service/Parts Fax: (402)-533-9292

E-MAIL: parts@con-e-co.com WEBSITE: www.con-e-co.com



**SOLID PRODUCTS. SOLID PERFORMANCE.**  
 237 N. 13<sup>TH</sup> ST - PO Box 430 - Blair, NE 68008  
 Phone: 800-656-2651 Fax: 402-426-4181 Service/Parts Fax: (402)-533-9292  
 E-MAIL: parts@con-e-co.com WEBSITE: www.con-e-co.com