



An Oshkosh Corporation Company

SPECIFICATIONS FOR MODEL 14-23 CEMENT BATCHER VENT

MODEL 14-23 SPECIFICATIONS

TOTAL CLOTH AREA	23 SQ. FT.
NUMBER OF BAGS	14
HOUSING HEIGHT	1'-10"
HOUSING WIDTH & LENGTH	0'-10" X 2'-11"
BAG CLEANING METHOD	REVERSE AIR FLOW (From batcher filling and emptying)
MAXIMUM OPERATING TEMPERATURE	170 DEGREES F
CAPACITY	180 CFM MAXIMUM
DISCHARGE SHAPE	(2) 2" X 12" SLOTS
CFM/FT ² THROUGH BAGS	7.83 MAXIMUM
AIRSPPEED OUT OF DEVICE	545 FT / MIN
DIRECTION OF AIR DISCHARGE	DOWN
DISCHARGE AREA	.33 FT ² (48 IN ²)
NORMAL OPERATING TEMP & PRESSURE	AMBIENT
OUTLET MOISTURE CONTENT	IDEALLY ZERO

BAG SPECIFICATIONS

BAG DIAMETER	4-1/2" DIA.
BAG LENGTH	16"
CONSTRUCTION	3 X 1 TWILL
FIBER	POLYESTER
FINISH	GREIGE
WEIGHT	7.1 OZ./SQ. YD.
THICKNESS	0.019"
MULLEN BURST	275 PSI (Min)
PERMEABILITY RANGE (0.5" WATER)	30-55 CFM/SQ. FT.
BAG EFFICIENCY	99.9% (*)

BATCHER VENT

LB / HR
GR / FT³

INTO BAGS

.00144 LB/YD³ * ___ YD³/HR
.648 GR HR/LB FT³ * ___ LB/HR

OUT OF BAGS

FOR ALL OUT OF BAGS VALUES, MULTIPLY THE INTO BAGS VALUES BY 0.001.

* BASED ON TESTS BY THE UNIVERSITY OF TENNESSEE.

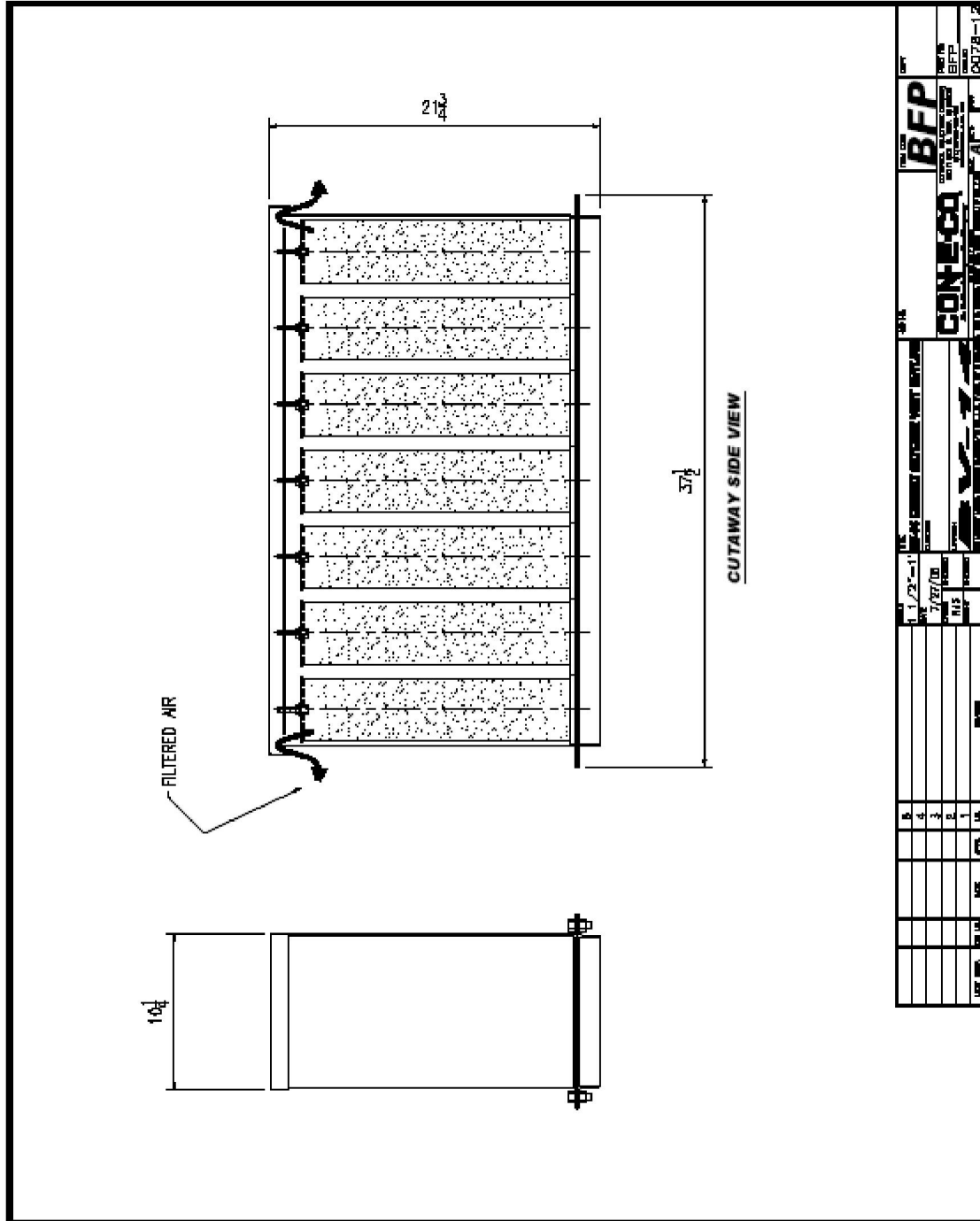


SOLID PRODUCTS. SOLID PERFORMANCE.

237 N. 13TH ST - PO Box 430 - Blair, NE 68008

Phone: 800-656-2651 Fax: 402-426-4181 Service/Parts Fax: (402)-533-9292

E-MAIL: parts@con-e-co.com WEBSITE: www.con-e-co.com



SOLID PRODUCTS. SOLID PERFORMANCE.
 237 N. 13TH ST - PO Box 430 - Blair, NE 68008
 Phone: 800-656-2651 Fax: 402-426-4181 Service/Parts Fax: (402)-533-9292
 E-MAIL: parts@con-e-co.com WEBSITE: www.con-e-co.com