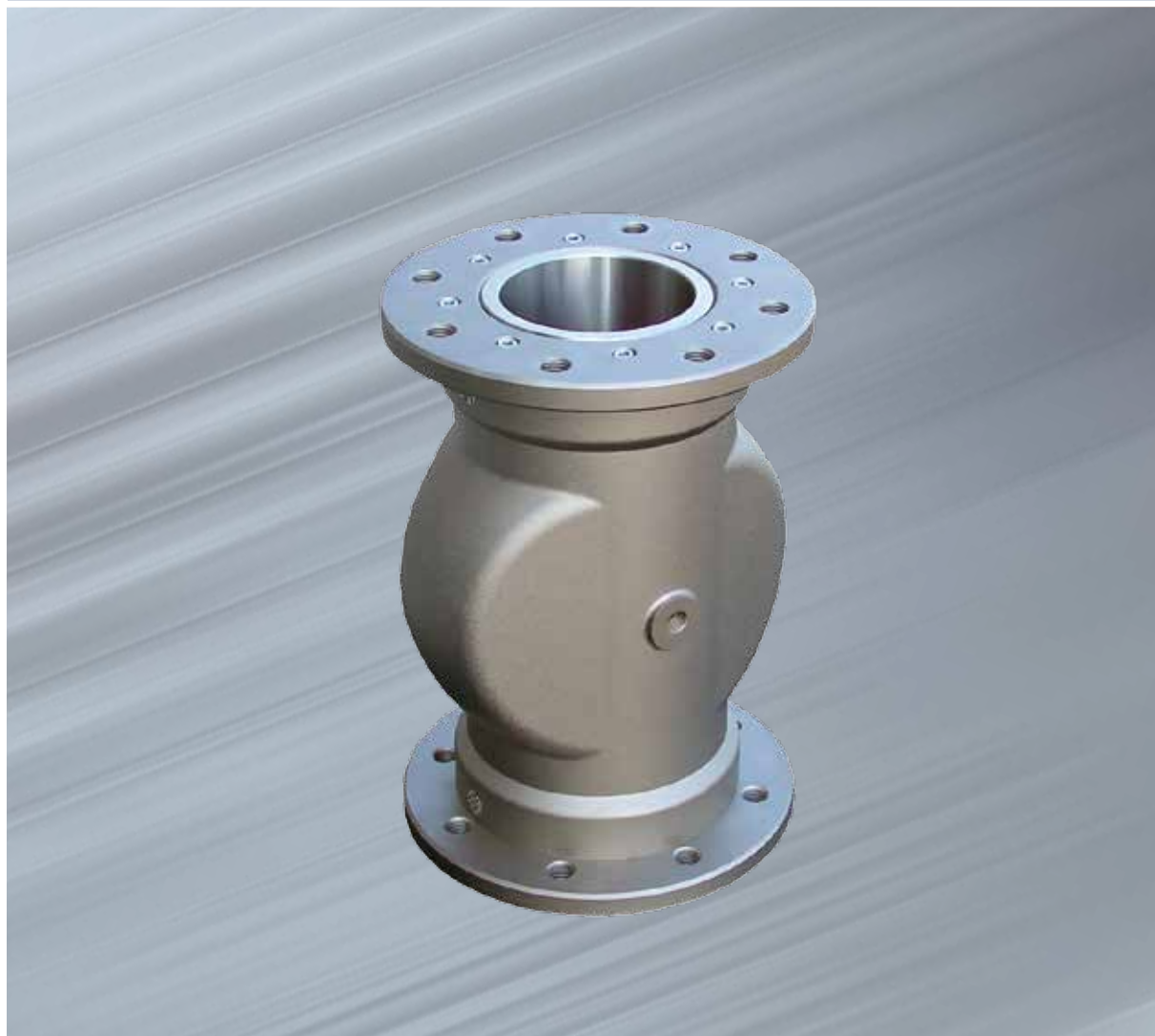


# Pinch Valves VM



**HIGH PERFORMANCE SHUT-OFF VALVE FOR PNEUMATIC CONVEYING SYSTEMS FOR POWDERS, GRANULAR OR SLURRIES; IMPROVES PROCESS EFFICIENCY THANKS TO QUICK AND EASY MAINTENANCE, NO TURBULENCES AND PRESSURE LOSSES THANKS TO FULL BORE SLEEVES INTEGRATING THE VALVE TO THE PIPELINE.**

By introducing compressed air through the threaded bore into the interior of the valve, the internal flexible sleeve is reshaped in such a way as the passage is hermetically sealed.

VM Pinch Valves equally handle pneumatically conveyed powders, granules and fibres.

## Features

Passage Diameter: 13 mm (1/2") – 20 mm (3/4") – 25 mm (1") - 32 mm (1 ¼") – 40 mm (1 ½") – 50 mm (2") – 65 mm (2 ½") – 80 mm (3") – 100 mm (4") – 125 mm (5") – 150 mm (6") – 200 mm (8")

- Working Temperature: from -10 °C up to 80°C
- Pi Internal Max. Pneumatic Conveying System Pressure: 3.5 bar
- Pc Closure control pressure: Pi + 2.5 bar (max. 6 bar)

## Accessories

### CONTROL PANEL VMX

Designed for operating the VM Pinch Valves, enabling:

- Open / Close air supply to the "VM" by the solenoid valve
- Adjust the closing pressure to "VM"
- Get information on the pressure line to "VM" by means of a 2.5 bar preset pressure switch

#### CONTROL PANEL VMX01N



Standard version

#### CONTROL PANEL VMX01NX



ATEX certified for Zone 22 (dust)

## Benefits

- ✓ **Compact overall dimensions;**
- ✓ **Easy and quick sleeve and bush replacement;**
- ✓ **Full bore-through passage without any pressure loss;**
- ✓ **No product contact with the casing;**
- ✓ **Sleeves manufactured from fabric-reinforced material;**
- ✓ **Sleeve support bushes either made from aluminium alloy, hardened carbon steel or 304 stainless steel;**
- ✓ **Apart from periodic replacement of the sleeve and the bushes, no maintenance required;**
- ✓ **Lightweight in comparison with other makes and other types of valve;**
- ✓ **Particularly low air consumption;**
- ✓ **Food-grade contact parts.**

# Benefits

## 1 Casing



Cast aluminium alloy

## 2 Sleeve



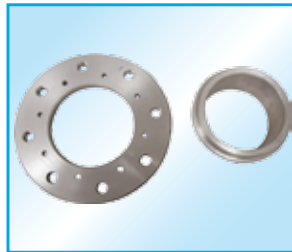
NR Natural Rubber anti-abrasion



NBR Natural Rubber food-grade

## 3 Connection Processes

**FLANGES AND BUSHES** - Available for passage diameter from 40 mm up to 200 mm



FLANGE: - Aluminium alloy  
BUSHES: - Aluminium alloy  
- Hardened Steel  
- 304 Stainless Steel

**THREADED BUSHES** - Available for passage diameter from 13 mm up to 100 mm

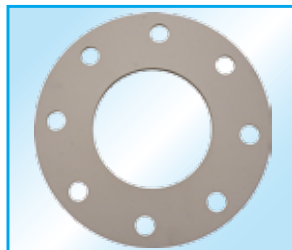


Threaded Bushes:  
Diameter from 13 mm up to 32 mm  
- Polymer  
Diameter from 40 mm to 100 mm  
- Aluminium alloy  
- Nickel Coated  
- 304 Stainless Steel

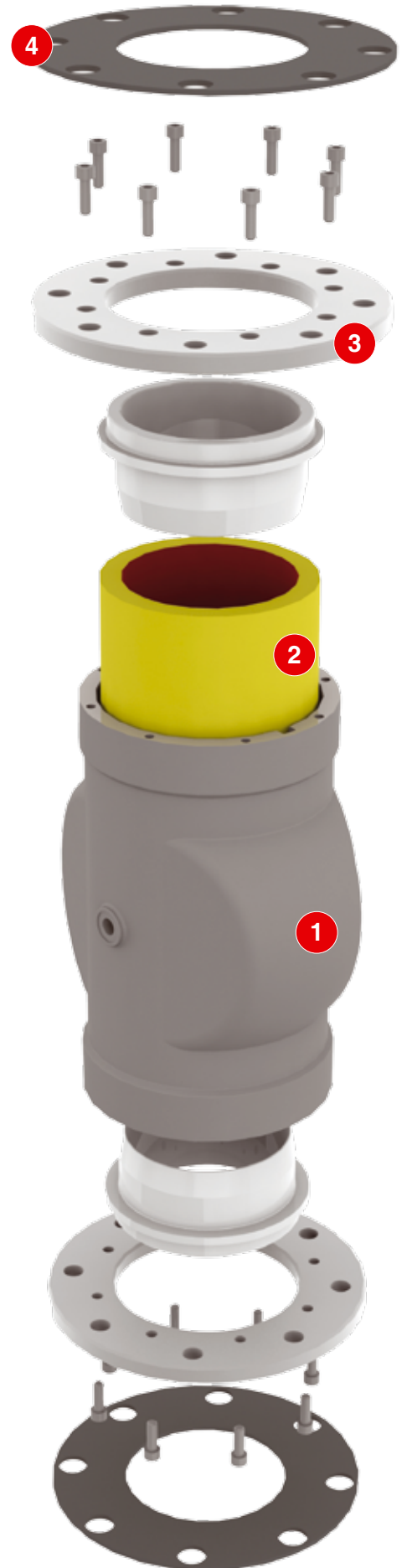
## 4 Gaskets - Available for flanged version only



Black



Food-grade white



# Application



VM Pinch Valves are used for material flow interception in pneumatic conveying systems, or other pipelines. In addition, they can be installed as a locking device for silo filling pipes. In the open position the internal cross section of the valve is identical with the connecting pipe diameter.



06/002349 January 2013 Rights reserved to modify technical specifications.



[www.wamgroup.com](http://www.wamgroup.com)