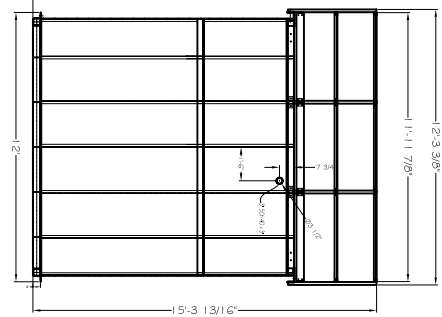
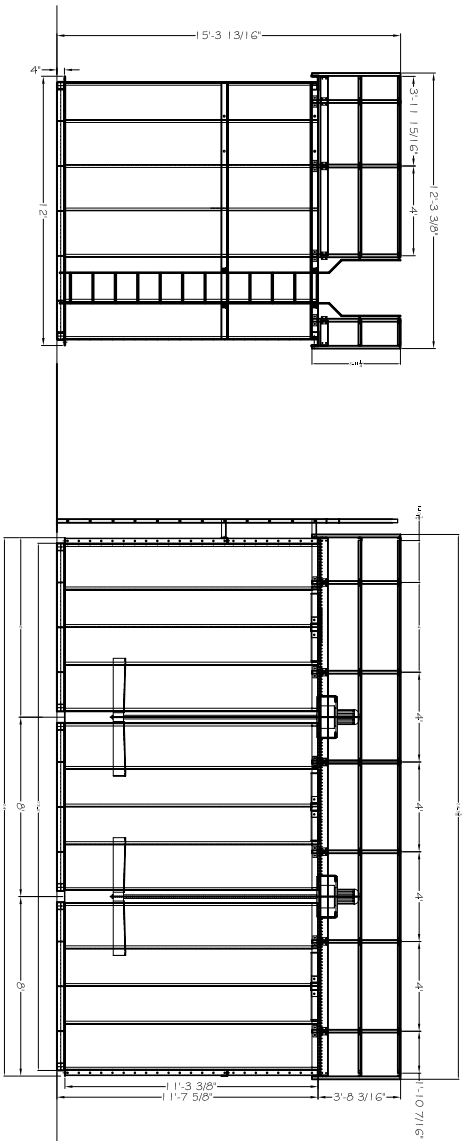
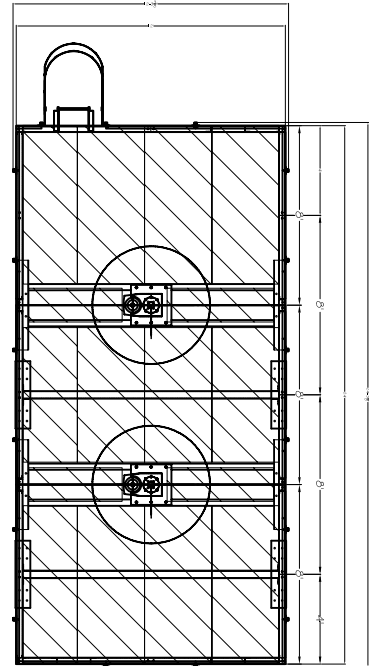


PC QTY	DESCRIPTION	WEIGHT	STOCK	REMARKS
No.				

MATERIAL LISTED FOR ONE



THIS DRAWING, ITS DESIGN, DETAIL AND INVENTION, ARE THE PROPERTY OF DAVE HUMPHREY ENTERPRISES, INC., SUBMITTED TO THE RECIPIENT IN CONFIDENCE, AND SHALL NOT BE COPIED IN ANY MANNER WITHOUT THE WRITTEN CONSENT OF THIS COMPANY. THEY SHALL BE USED EXCLUSIVELY FOR REFERENCE WORK ON CONTRACTS OR PROPOSALS SUBMITTED BY DAVE HUMPHREY ENTERPRISES, INC. AND SHALL BE RETURNED ON REQUEST. ALL RIGHTS RESERVED.

REFERENCES	TITLE
G	ABOVE GROUND SLURRY TANK
F	ASSEMBLY FOR A.3 PANEL TANK
E	
D	
C	
B	
A	

NO.	REVISION	BY	CH	DATE
	DRAWN			
	CHECKED			
	APPROVED			

DATE	SCALE
00-00-00	3/8" = 1'-0"

JOB NO.	DWG NO.
0000-000	000

CUSTOMER	NOBLE CONCRETE PLANTS
XXXXXX	145 GANDY DANCER DR. CALIFORNIA